

# Implications for Nash Equilibrium in Intelligent Transportation Systems and Allocation of Scarce Medical Resources

Ziyi Zong\*

School of Mathematics, University of Leeds, Leeds, United Kingdom

\*Corresponding author: mm22zz2@leeds.ac.uk

**Abstract.** The concept of Nash Equilibrium, originating from John Nash's seminal work in 1950, has evolved into a fundamental principle in game theory with applications across various disciplines. This essay delves into the practical implications of Nash Equilibrium, particularly in Intelligent Transportation Systems and the allocation of scarce medical resources. Through an analysis of contemporary research, this paper demonstrates how Nash Equilibrium is effectively employed in modeling traffic flows, optimizing traffic signal control, and managing route choices in transportation systems. Furthermore, it explores its application in strategically allocating medical resources during crises like the COVID-19 pandemic, ensuring efficient resource distribution and enhancing healthcare system resilience. While Nash Equilibrium offers valuable insights and strategies, its limitations in predicting stakeholder behavior and adapting to dynamic environments necessitate the development of more flexible models. Despite these challenges, the integration of Nash Equilibrium with AI holds promises for revolutionizing decision-making processes across various sectors, driving both theoretical advancements and practical applications in game theory. Overall, this study underscores the significance of Nash Equilibrium in understanding and managing strategic interactions, paving the way for improved efficiency and resilience in complex systems.

**Keywords:** Nash equilibrium; intelligent transportation systems; scarce medical resources; traffic flow modeling; healthcare allocation.

## 1. Introduction

Nash Equilibrium, as an integral component of game theory, has broad implications for fields ranging from economics to biology. The groundwork for the study of Nash equilibrium was laid by John Nash's groundbreaking work in 1950, when he published his seminal paper "Non-cooperative Games" [1]. In this work, Nash introduced the theory of equilibrium, which fundamentally transformed the field of game theory and laid the groundwork for further investigation into strategic interactions. Over the subsequent decades, scholars have actively and extensively explored the properties and applications of Nash equilibrium, building upon the theoretical framework established by John Nash. It is through their efforts that scholars today have gained a better understanding of the concept of equilibrium and its implications across various contexts.

Due to the efforts of scholars, the application of Nash equilibrium has expanded beyond traditional game theory to encompass fields such as economics, computer science, political science, management, sociology, and evolutionary biology.

In the realm of economics, Larry discussed the profound integration of Nash equilibrium into economic theory, illustrating how it has revolutionized economic thought [2]. His essay highlights that Nash equilibrium has emerged as a pivotal organizing principle for analyzing interactions among economic agents, solidifying its role as a cornerstone of methodological individualism. This paradigm is portrayed as a sophisticated model of individual behavior, offering a more comprehensive and general framework than traditional approaches. Such a framework facilitates the aggregation of individual behaviors to assess more complex economic phenomena. This expansive application is particularly evident in competitive markets, where Nash equilibrium forms the foundation of modern economic theory concerning market dynamics and strategic decision-making [2].

Nash Equilibrium is also extensively applied in political science, particularly in the analysis of political elections. Michalis et al. have developed a sophisticated game theory model where two political candidates engage in competition by proposing policies along a one-dimensional policy

spectrum. This model integrates a complex interplay of motivations, where candidates are driven by both the desire to secure electoral victory (power) and the ambition to enact specific ideological agendas (ideology). Their research further investigates how the interplay between these motivations shapes candidates' strategic choices, resulting in various equilibrium configurations such as policy convergence, bilateral policy differentiation, and unilateral policy differentiation. These equilibrium states demonstrate how candidates strategically align their policy positions with their motivations and the prevailing distribution of voter preferences, thereby showcasing the intricate strategic dynamics at play in political elections through the lens of Nash equilibrium [3].

In the realm of evolutionary biology, Nash equilibrium is applied to understand evolutionary game theory, particularly in scenarios where animals engage in conflicts, such as competing for resources like food or mates. This is illustrated through the behavior of animals, like cats, which display a 'limited war' strategy where they avoid physical contact and serious injury during confrontations over territory or mates, because they can minimize the risk of injury, thus enhancing survival and fitness [4].

The motivation behind this essay stems from a growing interest in understanding the practical implications of Nash equilibrium in contemporary environments. With a foundation in the historical research and recent advancements in Nash equilibrium studies, this essay aims to provide a comprehensive analysis of its applications across medical resources, Urban transportation, and commercial competition.

The framework of this essay will consist of the following. Some applications of Nash Equilibrium will be demonstrated. This paper summarizes the practical application of Nash equilibrium in these three fields. Besides, the related research principles and results are analyzed. Challenges and future directions are also clarified. This study discusses the limitations of Nash Equilibrium in the areas discussed in this essay and possible directions for future research.

## 2. Basic Descriptions

In game theory, Nash equilibrium, sometimes referred to as non-cooperative game equilibrium, is a crucial combination of strategies. Nash equilibrium represents a strategic scenario where each player selects a strategy from their respective sets, and no player has an incentive to unilaterally change their strategy, given the strategies chosen by others [1]. Putting more simply, it happens when no participant has an incentive to modify their selected approach within a combination of strategies as long as the others stay the same.

Understanding the mathematical definition of Nash equilibrium can be more challenging compared to its economic counterpart. Mathematically, this concept is formalized as follows. A Nash equilibrium of a strategic game  $\langle N, (A_i), (\text{Weak Preference}) \rangle$  is a profile  $a^* \in A$  of actions with the property that for every player  $i \in N$ , one has  $(a^*_{-i}, a^*_i)$  is weakly preferred to  $(a^*_{-i}, a_i)$  for all  $a_i \in A_i$ . Thus, for  $a^*$  to be a Nash equilibrium it must be that no player  $i$  has an action yielding an outcome that he prefers to that generated when he chooses  $a^*_i$ , given that every other player  $j$  chooses his equilibrium action  $a^*_j$ . Briefly, no player can profitably deviate, given the actions of the other players. [5].

The mathematical formulation of Nash equilibrium serves as a rigorous and robust framework for analyzing strategic interactions across diverse fields, spanning from economics and game theory to computer science and biology. This framework enables researchers to delve into the strategic decisions made by individuals or entities, assessing the stability of resulting outcomes and identifying instances where actors lack motivation to alter their strategies. Hence, through mathematical modeling and analysis, researchers can delve deeper into the implications of strategic behavior, allowing for the prediction of outcomes in intricate systems such as financial markets, urban transportation networks, international trade dynamics, and biological ecosystems.

### 3. Applications

#### 3.1. Scenario 1: Intelligent Transportation Systems

Due to population growth and an increase in vehicle numbers, road congestion has become a global issue, leading to significant time losses, environmental pollution, and increased costs for industrial operations and road maintenance. The escalation of travel times due to congestion severely impacts production efficiency and operational costs, making it crucial to effectively manage both the causes and consequences of traffic congestion.

Nash Equilibrium provides an effective strategy tool in this respect, which can greatly promote the management of traffic congestion. Nash Equilibrium is adeptly utilized in the modeling and optimization of traffic flows within road networks, particularly in addressing congestion's root causes and ramifications. Researchers Mateusz, Jarosław, Jerzy, and Aleksandra have applied Nash Equilibrium to describe a scenario in which each driver, in a decentralized system, selects routes based on personal interest. Their goal is to equalize the average travel time between each origin-destination pair across all routes. This method facilitates the prediction of traffic patterns and the optimization of road usage, thereby enhancing the overall efficiency of the network across various traffic volumes. Moreover, the equilibrium state suggests that no individual route selection change will improve upon the current configuration, thereby reinforcing the stability and predictability of traffic management strategies [6].

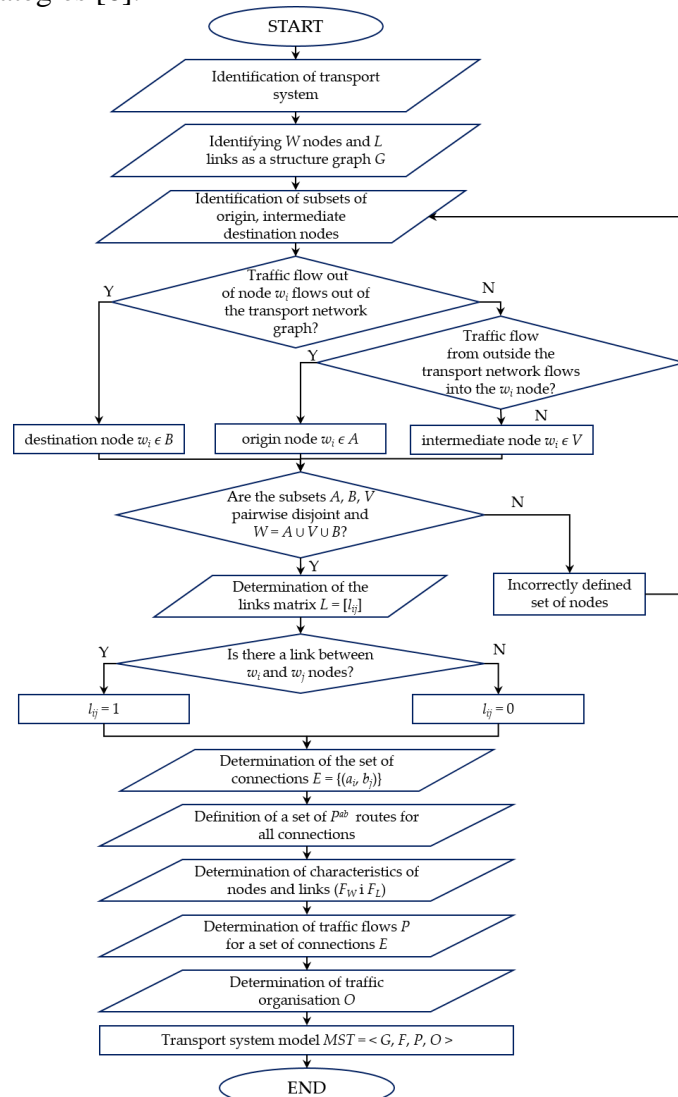


Fig. 1 Transport system model creation algorithm (TSMA) [6].

Fig. 1 demonstrates the algorithm used for creating a transport system model that incorporates Nash Equilibrium [6]. This model is instrumental in simulating the potential outcomes of different traffic management strategies and provides a visual representation of the processes involved in achieving equilibrium across the network. By analyzing these interactions, planners can more accurately forecast and mitigate the impacts of road congestion.

In addition, Nash equilibrium can also be used in traffic signal control and path selection behavior analysis. In terms of traffic signal control, A study conducted by Wei et al. applies Nash Equilibrium in the context of adaptive traffic signal control by utilizing multi-agent deep reinforcement learning (MARL) [7]. Their research demonstrates that by using the Nash Asynchronous Advantage Actor-Critic (Nash-A3C) algorithm, traffic congestion can be significantly reduced, improving both the efficiency of traffic networks and reducing the environmental impact of idle vehicles. Experimental results in a simulated urban environment showed that Nash-A3C outperformed traditional traffic control methods by 22.1%, thereby validating the effectiveness of integrating game-theoretical models in real-time traffic management [7].

With respect to path selection behavior analysis, In the research by Zhao and Wang, Nash equilibrium is applied to model route choice behaviors in traffic networks [8]. The study specifically uses this concept within a congestion game framework to solve the Traffic Assignment Problem (TAP). By incorporating Nash equilibrium, they develop a distributed algorithm that optimally balances the route choices among travelers, effectively minimizing overall travel time across the network. This application demonstrates how Nash equilibrium can facilitate efficient route distribution and enhance traffic flow management in complex transportation networks [8].

In conclusion, Nash equilibrium plays a critical role in enhancing Intelligent Transportation Systems. By facilitating more effective route and traffic management strategies, Nash Equilibrium not only boosts the efficiency of transportation networks but also significantly contributes to the sustainability of urban environments.

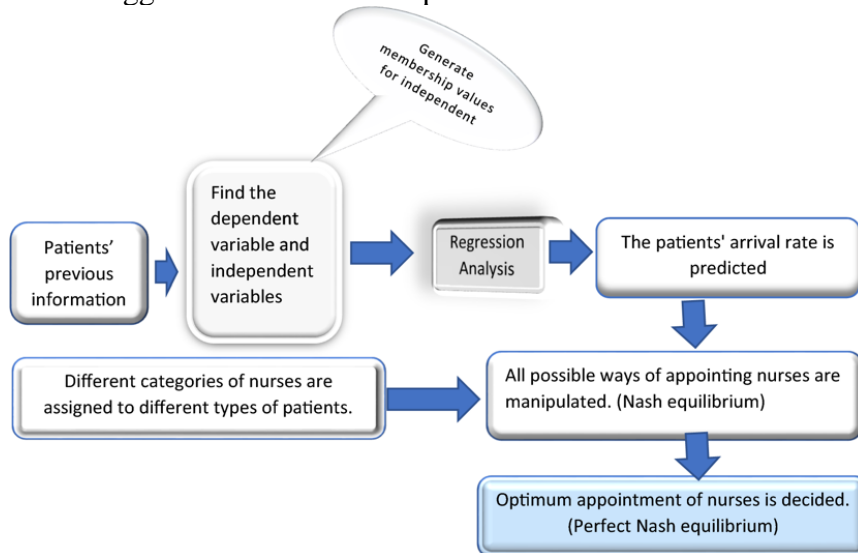
### 3.2. Scenario 2: Allocation of Scarce Medical Resources

A pandemic is defined by the rapid and widespread transmission of a disease worldwide, often affecting multiple countries and large populations. The spread of the disease is not confined by geographical boundaries, allowing it to cross international borders and impact diverse populations and communities. The SARS-CoV-2 virus caused the COVID-19 pandemic in 2020, posed numerous global challenges. These included widespread illness and death due to the disease itself, exacerbated by economic difficulties, increased unemployment, and the inefficient distribution of critical healthcare resources such as food and oxygen. The COVID-19 pandemic of 2020 brought to light the vital necessity of making smart decisions while allocating limited medical resources. The Nash Equilibrium has significant uses in this environment.

Regarding the allocation of scarce medical resources, the Nash equilibrium is used effectively to strategically allocate health resources. The researchers used Nash equilibrium to model healthcare providers in a decentralized system, assessing scenarios for allocating resources such as medical oxygen based on critical needs. The main goal of this approach is to ensure that each affected area has access to an adequate supply of resources to minimize health impacts and balance resource allocation to improve the resilience and efficiency of the healthcare network under varying levels of stress. In addition, the balanced state ensures that the resource allocation adjustment of any single provider will not lead to the reduction of the efficiency of the overall allocation, further enhancing the stability and predictability of the medical resource management strategy. This approach not only helps optimize the deployment of medical supplies, but also predicts resource needs in advance, ensuring a rapid and effective response in health emergencies [9].

Several years ago, Rekha Sahu et al. also employ Nash equilibrium as a strategic decision-making tool in their research but focusing its application on the allocation of nursing staff within hospitals. They focus on the critical challenge of optimizing nurse staffing to simultaneously enhance patient care and manage costs and resources efficiently. Their methodological approach incorporates a hybrid

model that synergizes linear regression, fuzzy set theory, and game theory concepts, including Nash and full Nash equilibria, to achieve a balanced staffing strategy. This model dynamically adjusts nurse distribution in accordance with patient arrival rates and specific hospital requirements. The strategic implementation of this model ensures an equitable distribution of nursing resources, which significantly enhances both resource management and the quality of patient care outcomes [10]. A process diagram of the suggested method for hospital nurse allocation is shown in Fig. 2 [10].



**Fig. 2** Workflow diagram of the proposed approach [10].

The workflow diagram depicts the process from initial data inputs through multiple linear regression analysis and the application of fuzzy set theory for quantifying variables, culminating in the use of Nash Equilibrium and Perfect Nash Equilibrium to determine optimal nurse allocation based on predicted patient arrival rates and nurse availability.

Overall, the strategic use of Nash Equilibrium in healthcare settings demonstrates a forward-thinking approach to managing crises and routine healthcare challenges, ensuring that resources are utilized optimally and equitably, thereby enhancing the stability and predictability of healthcare systems worldwide.

#### 4. Limitations and Prospects

Nash equilibrium, as the basic concept of game theory to analyze strategic interaction, has been widely used in various disciplines. However, it also faces significant challenges and limitations.

Rudrashis et al. have mentioned the limitations of this field in their article "Game Theory." They note that accurately predicting the behavior and preferences of all relevant stakeholders poses a significant challenge, which can lead to suboptimal or potentially detrimental outcomes if misjudged. Furthermore, the dynamic and unpredictable nature of pandemics, such as COVID-19, further complicates the application of Nash equilibrium. The constantly evolving situation necessitates frequent adjustments to strategies based on new and emerging data. This ongoing flux introduces a substantial layer of uncertainty, complicating the assurance that the Nash equilibrium can provide a genuinely optimal solution under such rapidly changing conditions [9].

Traditional applications of Nash equilibrium assume a static environment where the strategies of players and the resulting outcomes remain constant unless the underlying game changes. However, this static assumption does not hold in real-world situations where conditions can shift unpredictably and quickly, necessitating frequent recalibration of strategies. Thus, there is a growing need for more adaptive strategic models capable of responding to real-time information and evolving scenarios to maintain effectiveness and relevance. These challenges underscore the limitations of Nash equilibrium in complex and dynamic environments and highlight the necessity for developing more

robust and flexible models that can better accommodate the nuances and uncertainties of real-world applications.

Looking ahead, the prospects of Nash equilibrium across diverse disciplines appear both promising and challenging. This stems primarily from the evolving complexities of global issues and the rapid pace of technological advancements. A particularly noteworthy topic is the enhancement of Nash equilibrium through AI integration. As technology progresses, it becomes increasingly probable that Nash equilibrium will be integrated with machine learning algorithms to better predict outcomes in dynamic systems. This integration could lead to the development of models that more accurately simulate human decision-making processes and adapt in real time to changes. Such advancements would significantly enhance the predictive power and applicability of Nash equilibrium in complex scenarios. Furthermore, as computational capabilities expand, the ability to apply Nash equilibrium to increasingly complex systems will improve. It is expected that algorithms capable of handling high-dimensional dynamic strategic games will emerge, furthering the robustness and reach of Nash equilibrium across various fields. These advancements promise to revolutionize the traditional applications of game theory, making it more effective in navigating the complexities of modern strategic environments.

## 5. Conclusion

To sum up, this study has thoroughly explored the wide-ranging applications and profound implications of Nash equilibrium across diverse disciplines, illustrating its pivotal role in advancing game theory into practical scenarios like intelligent transportation systems and the strategic allocation of medical resources. By leveraging Nash equilibrium, researchers have developed sophisticated models that effectively address complex challenges such as optimizing traffic flow and distributing healthcare resources during crises, thereby enhancing operational efficiencies and response strategies in these critical areas. However, the application of Nash equilibrium is not without its limitations. Challenges such as predicting stakeholder behavior accurately and adapting to rapidly changing environments underscore the need for more dynamic and flexible strategic models. These models must be capable of incorporating real-time data and adjusting to evolving circumstances to remain effective.

The future of Nash equilibrium looks promising yet demanding, given the pace of technological advancements and the complexity of global issues. With the integration of AI and machine learning, there is potential for even more sophisticated applications that could revolutionize decision-making processes in various sectors. Ultimately, the continued exploration and adaptation of Nash equilibrium hold significant potential for enhancing our understanding and management of strategic interactions across a multitude of arenas, driving both theoretical advancements and practical applications in game theory. This ongoing development is crucial for keeping pace with the dynamic nature of global challenges and opportunities in the modern world.

## References

- [1] Nash J. 'Non-cooperative games', *Annals of Mathematics*, 1950, 54(2): 286-295.
- [2] Samuelson L. *Game Theory in Economics and Beyond*. *Journal of Economic Perspectives*, 2016, 30(4): 107-30.
- [3] Drouvelis M, Saporiti A, Vriend NJ. Political motivations and electoral competition: Equilibrium analysis and experimental evidence. *Games and Economic Behavior*, 2014, 83: 86-115.
- [4] Ray-Mukherjee J, Mukherjee S. Evolutionary stable strategy. *Reson*, 2016, 21: 803–814.
- [5] Osborne M J, Rubinstein A. *A course in game theory*. MIT press, 2012.
- [6] Oszczywała M, Ziółkowski J, Małachowski J, Lęgas A. Nash Equilibrium and Stackelberg Approach for Traffic Flow Optimization in Road Transportation Networks—A Case Study of Warsaw. *Applied Sciences*, 2023, 13(5): 3085.

- [7] Wei W, Wu Q, Wu J, et al. Multi-agent deep reinforcement learning for traffic signal control with Nash Equilibrium', IEEE International Conference on High Performance Computing and Communications, 2014: 1435-1442.
- [8] Zhou B, Song Q, Zhao Z, Liu T. A reinforcement learning scheme for the equilibrium of the in-vehicle route choice problem based on congestion game. Applied Mathematics and Computation, 2020: 371.
- [9] Majumder R, Jana S, Ghose D. Game Theory-Based Decision Making for the Allocation of Scarce Medical Resources in the COVID-19 Situation. IEEE Transactions on Systems, Man, and Cybernetics: Systems, 2024, 54(4): 2137-2148.
- [10] Sahu R, Das S, Dash S R. Nurse allocation in hospital: hybridization of linear regression, fuzzy set and game-theoretic approaches. Sādhanā, 2022, 47(170).