

Application of Shatoujiao Fish Lantern Dance Elements in Catering Space Design

Meiqing Lin, Bo Wang

Guangdong university of science and technology, Dongguan, Guangdong 532000, China

Abstract: Shatoujiao Fish Lantern Dance is a unique manifestation of Hakka folk culture, originating from Kangxi in the Qing Dynasty and having developed for more than 300 years to date, It was listed in the National Intangible Cultural Heritage List in 2008. As a national intangible cultural heritage, the protection and inheritance of the Shatoujiao Fish Lantern Dance is of great significance for maintaining cultural diversity and promoting sustainable cultural development. However, with the highly modernized and urbanized development of Shenzhen, the Shatoujiao Fish Lantern Dance has been impacted and influenced to some extent by modernization and foreign culture. This art has gradually lost its display platform, causing people to pay less and less attention to it. In view of this, this article believes that it is necessary to strengthen the inheritance and protection of the Shatoujiao fish lantern dance, and seek multiple forms of dissemination and display of the Shatoujiao fish lantern dance. Therefore, this study aims to explore in depth the specific application of Shatoujiao fish lantern dance elements in the field of catering space design. This study combines life-oriented art forms with the functionality of daily dining venues, and achieves a deep integration of art and life.

Keywords: Fish Lantern Dance; Catering Space; Cultural Heritage.

1. Introduction

In the context of urbanization and cultural diversity, the inheritance and development of local traditional culture have become a focus of attention for all sectors of society. The Shatoujiao Fish Lantern Dance carries the wisdom, emotions, and life memories of the local people, and is one of the important regional cultures in Shenzhen. Nowadays, how to make the Sha Tau Kok Fish Lantern Dance shine with new vitality and energy in contemporary society has become an urgent problem to be solved. Catering space is an important place for interpersonal communication in people's daily lives. It not only meets people's daily dietary needs, but also has the function of promoting culture and creating an atmosphere. Integrating the elements of Sha Tau Kok Fish Lantern Dance into the design of dining spaces is a new way to promote the traditional culture of Sha Tau Kok Fish Lantern Dance. This cross disciplinary fusion design not only meets the spiritual and cultural needs of the people, but also enhances the dining experience, allowing diners to enjoy delicious food while also learning about the traditional culture of the Shatoujiao fish lantern dance. [1]

Traditional Chinese culture has extremely high artistic aesthetic value and is complementary to modern art creation. Applying it to modern art design can enhance the dissemination, aesthetic, and infectious power of art design [2]. Explore the effective application of Shatoujiao fish lantern dance elements in catering space design, through in-depth research on Shatoujiao fish lantern dance culture. Cleverly transforming the form, color, and cultural elements of the Shatoujiao fish lantern dance into the design language of the dining space, creating a dining space that meets both modern functional requirements and is filled with a rich regional cultural atmosphere.

Traditional elements are an aesthetic language with cultural recognition and Chinese visual aesthetics. They have a wide range of content and diverse forms of expression, and can be integrated with different design fields to create works that

combine art and culture through collision [3]. In the overall spatial planning, based on the characteristics of the Sha Tau Kok Fish Lantern Dance and the functional requirements of the restaurant, the dining space is divided into different functional areas, such as the front desk area, booth area, walk-in area, stage area, kitchen, bathroom, and private rooms. Each area showcases the different connotations of the theme through different special design techniques, allowing customers to feel the unique charm of the Shatoujiao fish lantern dance while dining in each area.

Color design not only affects the emotional atmosphere of the space in interior design, but also effectively guides the viewer's gaze, enhances the functionality and aesthetic feeling of the space [4]. The color of the Shatoujiao fish lantern dance is bright and has strong folk characteristics, such as red, yellow, blue, orange, etc. Accurately extract local colors during the design process, and match different colors according to different spaces. The large area of the wall adopts light blue as the main color tone, creating an atmosphere of the ocean. The ground is made of multicolored tiles such as gray and beige, creating a simple and bright sense of space. The ceiling design adopts a wood yellow color, which is exciting and makes people feel warm, happy, and relaxed. The dining table is made of dark gray to highlight the vibrant colors of the food. The dining chair is made of dark blue, deep and mysterious. Green plants and colorful cushions are the accent colors of the dining space, making the space rich and layered. Finally, through color selection, brightness contrast, and color area ratio, a dining space narrative system with the color elements of Shatoujiao fish lantern dance was constructed, achieving an organic unity of commercial value and aesthetic value.

The concept of lighting is extremely important in the overall planning of creating a spatial atmosphere. A lamp is not just a simple illumination, it also tells a story. Lights give a certain meaning, providing metaphors and styles for comedic life stages [5].

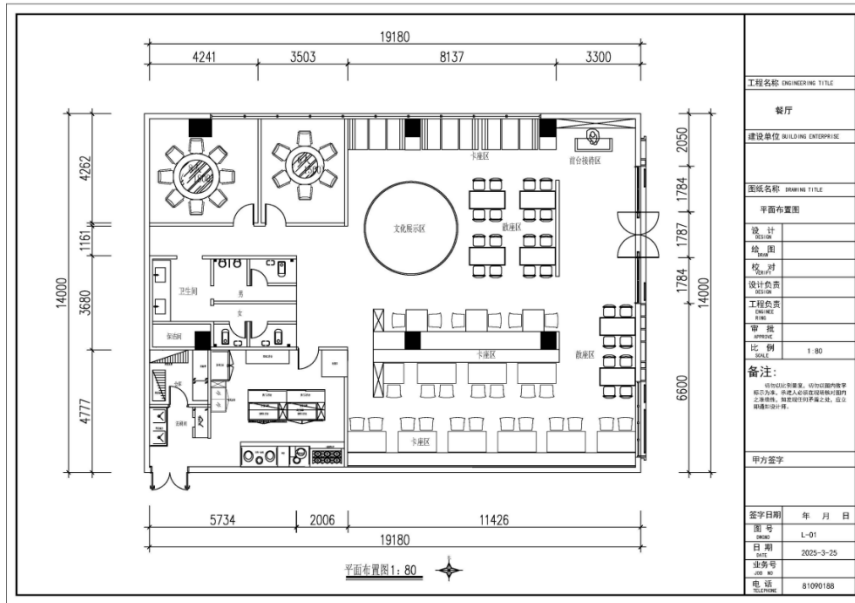


Figure 1. The floor plan of this design



Figure 2. Color Extraction Diagram

The illuminance, color temperature, and brightness of lighting affect the atmosphere of the dining space. In design, the lighting methods for the entire space are divided into indirect lighting, direct lighting, effect lighting, and accent lighting. Decorative lights with high color temperature hanging on the ceiling are used for ambient lighting, making the entire viewing space have no dark corners. Hanging a low color temperature chandelier above the desktop is used to emphasize lighting, improve the color rendering of the object, and increase customers' appetite. In the design of diversified lighting methods, it is also necessary to clarify the contrast and primary secondary relationship of light and dark in the lighting space. The area with the highest brightness is not necessarily the focus of lighting design. The focus of lighting should be displayed through the concentrated use of multiple lighting methods to render the atmosphere of the space [6]

Currently, wood is the most commonly used material for traditional Chinese furniture. Furniture made primarily of wood has a long service life, clear textures, and antique colors, which can easily resonate with consumers' emotions and have strong expressive power. The natural beauty of wood itself is fully expressed [7]. The design of furniture not only needs to conform to ergonomics but also reflect the elemental characteristics of the Shatoujiao fish dance. The front of the dining chair is designed with the pattern of a Shatoujiao fish lantern dance, and the back is designed with the shape of a fish lantern. The entire chair is made of a combination of fabric and wood, reflecting the new Chinese style decoration

style.



Figure 3. The rendering of the private room in this design

The dining cabinet, storage cabinet, and partition cabinet are made of light yellow wood, which echoes the ceiling and reflects the overall style unity. The booth partition is made of dark metal fish scale material, adding a modern element to the cultural atmosphere. The partition between the booth and the loose seat is simplified with acrylic fish light dance image decoration, and the built-in light strip in the exhibition cabinet enhances the artistic expression of the environment.

In the design of dining spaces, attention should be paid to the combination of tradition and modernity, avoiding blindly pursuing tradition. With the development of modern technology, the innovation of Shatoujiao fish lantern dance elements should be combined with intelligent interaction to further explore the expression of traditional culture in high-tech environments. Modern technology can be used to express traditional connotations, and AI interactive devices can be used to unlock the intrinsic culture of the Shatoujiao Fish Lantern Dance.



Figure 4. The rendering of the AI interactive device at the entrance of this design

2. Conclusion

The value of this study lies not only in exploring the cross-border integration of traditional folk art and commercial space design, but also in providing new ideas for the dynamic

inheritance of intangible cultural heritage. Through design practice, the cultural memory of the Shatoujiao Fish Lantern Dance can be continued in contemporary life.

Acknowledgments

This project is supported by Scientific research department of Guangdong University of science and technology, project number: GKY-2024KYYBW-84.

References

- [1] Li Jingwen Exploring the Inheritance of Lingnan's "Shatoujiao Fish Lantern Dance" from the Perspective of Intangible Cultural Heritage [D]. Guangzhou: South China University of Technology, 2022:44.
- [2] ang Chunliang Thoughts on the Integration of Traditional Culture and Modern Art Creation [J]. New Beauty Domain, 2024, (04):49-51.
- [3] Huang Shuying Design and Application of Shatoujiao Fish Lantern Dance in Regional Cultural IP [D]. Guangzhou: Guangzhou University, 2024.
- [4] Wang Juping Analysis of the Application of Color Elements in Interior Decoration Design of Buildings [J]. Jushe, 2024, (28):6-8.
- [5] Mei Fa Chai Creating Cultural Atmosphere with Lighting - Italian Lighting Design [J]. Decoration, 2006, (01):85.
- [6] Zhang Zhiguo Research on the Basic Principles and Key Points of Indoor Restaurant Lighting Design [J]. Light Source and Illumination, 2025, (01):10-12.
- [7] Zhang Xiuhai Research on the Application of Traditional Furniture Elements in Modern Furniture Design [C]. Yantai: Shandong Urban Service Technician College, 2019: 1.