

Research on the Integration Path of Village Industries Based on the Agriculture-Culture-Tourism-Wellness Theory: A Case Study of Yuxiao Village, a Manchu Village in Zunhua City

Meiqi Li, Yajie Liu and Ting Wang *

School of Architecture and Urban Planning, Beijing University of Civil Engineering and Architecture, Beijing 100044, China.

Abstract: Industrial integration is a key pathway to promote rural revitalization and achieve prosperous village industries. This study takes Yuxiao Village, a Manchu imperial tomb-guarding village in Zunhua City, as the research object. Based on the Agriculture-Culture-Tourism-Wellness (ACTW) theory and the five dimensions of rural revitalization, this paper systematically explores the current status, characteristics, dilemmas, and optimization paths of industrial integration in the village by adopting methods such as literature review and field investigation. The findings indicate that Yuxiao Village possesses natural endowments for integration, including location advantages, cultural heritage, ecological resources, and agricultural foundations. Although industrial integration has been initially developed, it still faces challenges such as insufficient policy support, inadequate cultural exploration, low-level product development, and limited technological innovation. Accordingly, this study proposes targeted optimization strategies from the perspectives of talent, culture, and technology to promote the deep integration of agriculture, culture, tourism, and wellness industries. The research results not only provide practical guidance for industrial upgrading in Yuxiao Village but also offer references for similar ethnic minority villages in China to promote integrated development and achieve comprehensive rural revitalization.

Keywords: Industrial Integration; Manchu Village; Agriculture-Culture-Tourism-Wellness; Yuxiao Village.

1. Introduction

In recent years, China has vigorously promoted the rural revitalization strategy and accelerated urban-rural integration. Traditional ethnic minority villages are now facing new opportunities and challenges in balancing protection and development. As carriers of Chinese cultural heritage and millennia-old agricultural civilization, such villages often present a contradiction in spatial planning: rich cultural resources but weak industrial vitality, and high ecological value but insufficient supporting services. This situation raises a practical question: how to activate rural resources, optimize industrial structures, and strengthen collective rural economies, thereby enhancing village value and development momentum.

Existing studies mainly focus on the integration of primary, secondary, and tertiary industries in ethnic minority areas, the development paths of rural collective economies, and the coordinated advancement of culture, tourism, and wellness industries. One group of studies emphasizes the practical pathways and mechanisms of industrial integration for agricultural value-added and rural industrial chain extension [1, 10]; another highlights the leading role of cultural resources in rural revitalization in ethnic areas, exploring how cultural elements promote tourism and wellness industries [4, 7, 8]; other studies focus on typical ethnic minority villages, such as those of the Hezhe ethnic group, exploring practical models and development pathways for the integrated development of Agriculture-Culture-Tourism-Wellness industries [2]. In addition, some research examines innovation in rural collective economic organizations and their sustainable development paths, proposing institutional safeguards and market-oriented operational models [3, 5, 6].

These studies provide a theoretical foundation and practical experience for the integration of Agriculture-Culture-Tourism-Wellness.

However, despite their contributions, several limitations remain. First, most studies are conducted at macro or regional levels, lacking micro-level field evidence and path verification for specific ethnic minority villages. Second, discussions on the coordination mechanisms, benefit distribution, and governance models of the four elements—agriculture, culture, tourism, and wellness—are relatively fragmented, with a lack of systematic implementation frameworks. Third, there is a lack of actionable recommendations on balancing ecological carrying capacity, cultural preservation, and market-oriented operations in the implementation of strategies. Moreover, existing review studies on the integration of agriculture and tourism industries also indicate that research on integration pathways and mechanisms at the micro village level still needs to be further deepened [9]. Therefore, there is an urgent need for in-depth field research based on typical cases to provide practical insights for the local application of industrial integration theories and to formulate actionable development paths.

This study takes Yuxiao Village, a traditional Manchu village in Zunhua City, Hebei Province, as the research object. From the perspective of Agriculture-Culture-Tourism-Wellness integration theory, it focuses on the village's industrial development status, resource advantages, and integration potential. Through literature analysis, semi-structured interviews, field surveys, and symposiums, this study systematically collects and analyzes first-hand data to comprehensively understand its industrial characteristics and existing challenges. Based on this, it proposes suitable development paths and strategic recommendations for industrial integration, aiming to provide theoretical references

and practical guidance for rural revitalization and sustainable development of rural collective economies in ethnic minority villages.

2. Overview of Industrial Economic Development in Yuxiao Village

2.1. Village Profile

Yuxiao Village is located in Dongling Manchu Township of

Zunhua City, situated in the central-western part of the core area of the Eastern Qing Tombs World Cultural Heritage site. Its unique location, profound historical and cultural heritage, and distinctive Manchu ethnic resources constitute the core foundation and natural endowment for the integration of agriculture, culture, tourism, and wellness industries.

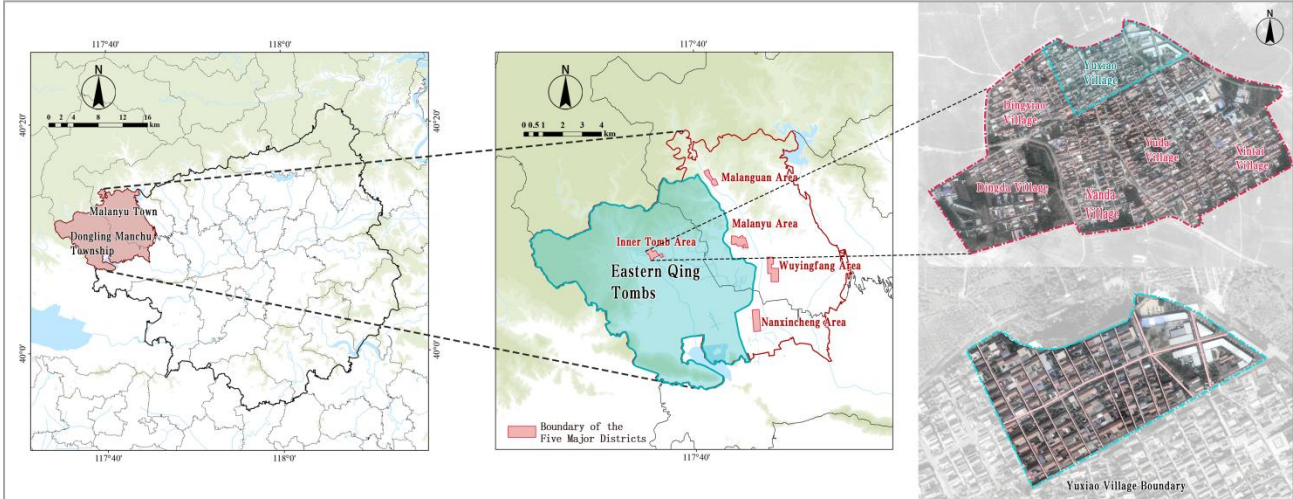


Figure 1. Location Map of Yuxiao Village

As a World Cultural Heritage site, the Eastern Qing Tombs provide a significant cultural foundation for the industrial integration of Yuxiao Village through their imperial mausoleum culture. The village, historically known as "Yuling Xiaoquan," was established during the Qianlong period of the Qing Dynasty as an imperial tomb-guarding village responsible for protecting the mausoleum of Consort Yu of Emperor Qianlong. The cultural heritage of tomb guardianship not only serves as a defining identity of the village but also provides the core cultural connotation for the "culture" and "tourism" sectors within the integrated development framework, aligning with the logic of coordinated cultural and industrial revitalization.

Approximately 80% of the population in Yuxiao Village are descendants of Manchu tomb guardians. The bat, a traditional auspicious symbol favored by the Manchu people due to its homophonic association with the Chinese character "fu" (meaning "fortune"), is reflected in the spatial layout of the village. The residential streets are arranged in the form of the Manchu character for "fortune," symbolizing blessings of prosperity, talent, clothing, land, longevity, and continuous good fortune for the tomb-guarding families. The preserved elements of Manchu clothing, customs, architecture, and spatial patterns can be transformed into experiential folk culture industries, enriching supply, highlighting ethnic characteristics, and aligning with the culturally grounded requirements of industrial integration in ethnic minority regions.



Figure 2. Photograph of "Yuling Xiaoquan"



Figure 3. Layout Plan of Yuxiao Village — Manchu "Fu" (Fortune) Character Pattern

In summary, the location advantages, historical and cultural resources, and ethnic characteristics of Yuxiao Village jointly lay the foundation for industrial integration: the proximity to the Eastern Qing Tombs ensures a steady flow of visitors, the

tomb-guarding and Manchu cultures provide rich cultural connotations, and ethnic characteristics offer differentiated advantages, all of which support the deep integration of agriculture, culture, tourism, and wellness industries and subsequent path exploration.

2.2. Characteristics of Industrial Integration Development in Yuxiao Village

2.2.1. Prominent Cultural Empowerment: Manchu Characteristics as the Core Identity of Integration

The most prominent feature of industrial integration development in Yuxiao Village is cultural empowerment, characterized by the deep integration of Manchu culture and

tomb-guarding culture. Field investigations reveal that the village still preserves a variety of Manchu historical and cultural relics, including ancient temple ruins, ancient wells, ancient trees, and traditional customs, all of which symbolize the beliefs and cultural identity of the Manchu people. The village has transformed its unique cultural resources into the core driving force of industrial integration by establishing exhibition venues such as the "Tomb Guardians' Residence" museum, renovating residential buildings in the Qing architectural style, and developing farmhouse tourism that highlights Manchu characteristics. These efforts deeply integrate tomb-guarding culture and Manchu folk elements into the development of cultural and tourism industries.

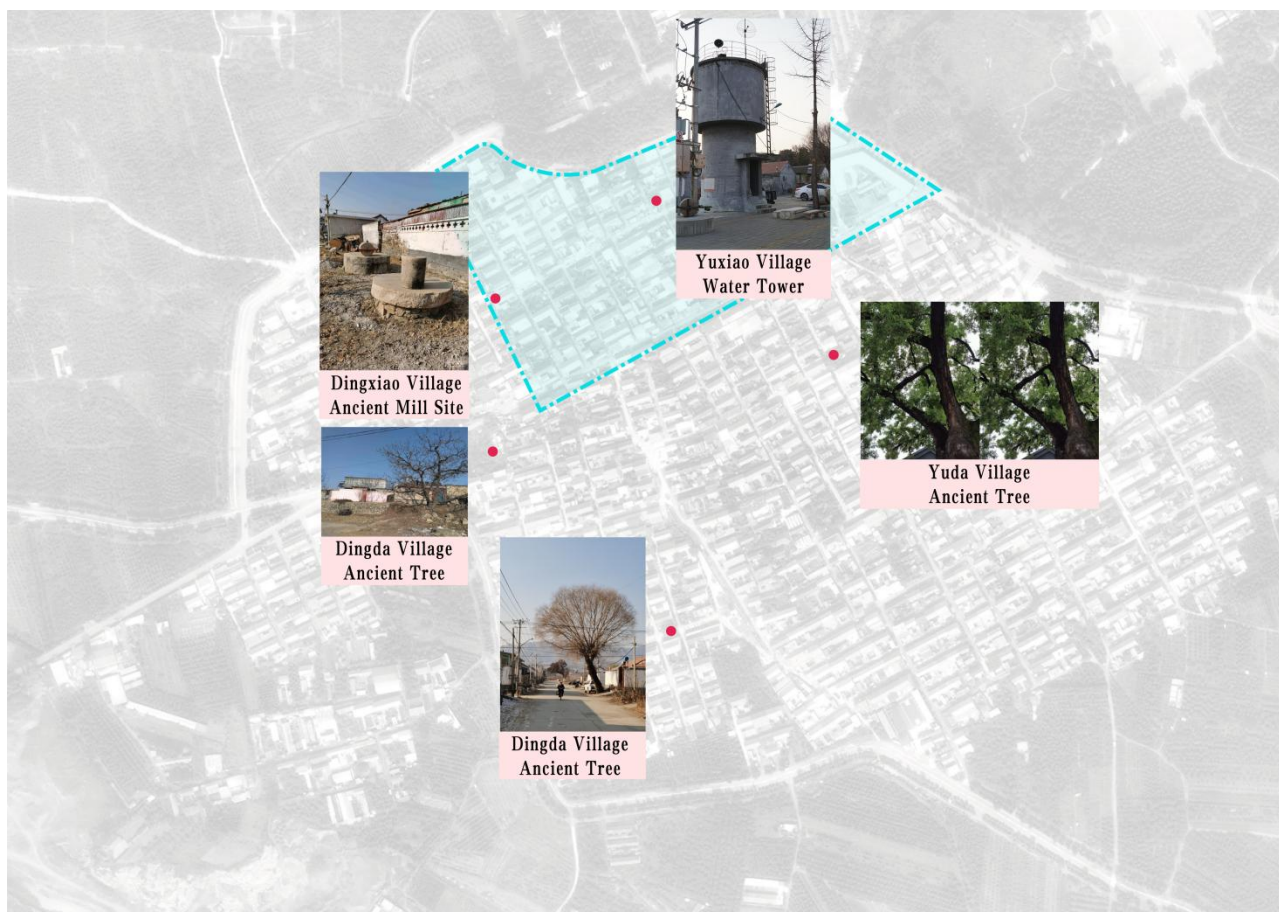


Figure 4. Distribution Map of Historical and Cultural Nodes

2.2.2. Initial Formation of an Integrated Pattern: Emerging Linkage Effects Between Primary and Tertiary Industries

Yuxiao Village has initially formed a development pattern integrating "agriculture + culture + tourism," with the linkage effects between primary and tertiary industries gradually emerging. As a typical mountainous agricultural area in an ethnic minority region, the village possesses 660 mu of cultivated land and 500 mu of forest land. It has long been dominated by crop cultivation, with characteristic agricultural products such as Yanshan chestnuts and Dongling white corn, along with scattered livestock and poultry breeding, providing a solid agricultural foundation for industrial integration. In recent years, the village has explored an under-forest planting model combining "chestnuts + economic crops," with an annual output of 200,000 jin of Yanshan chestnuts, 40,000 jin of walnuts, and 100,000 jin of Dongling white corn. Through professional cooperatives and storage and cold-chain facilities, the added value of agricultural

products has been enhanced, providing experiential and marketable products for the cultural and tourism industries and establishing a linkage channel between agriculture and tourism. Meanwhile, the village has developed cultural corridors, commercial streets, and picking gardens, and has collaborated with Tangshan cultural tourism enterprises to create characteristic scenarios such as "Guofeng Family Banquets," thereby promoting the development of cultural tourism industries. These efforts have driven agricultural product sales, increased villagers' incomes, and facilitated the transformation from a "single agricultural economy" to a "diversified integrated economy." However, the current integration remains at a relatively shallow stage. The level of agricultural industrialization is low, cultural tourism formats are highly homogeneous, and wellness industry has not yet been developed. A fully coordinated integration pattern of Agriculture-Culture-Tourism-Wellness has not yet been formed.

2.2.3. Prominent Government Leadership: Market Mechanisms and Endogenous Motivation Yet to Be Activated

The industrial integration of Yuxiao Village is primarily government-led, with its initiation and development largely dependent on policy guidance, financial support, and planning promotion. This aligns with findings in related studies indicating a low level of agricultural marketization, weak initiative among farmers, and a concentration of investment from various levels of government. According to the Hebei Province Tourism High-Quality Development Plan (2018-2025), Yuxiao Village, as a characteristic Manchu village, has received key support. The government invested 8.5 million yuan in the renovation of residential buildings, streets, and public facilities in a style imitating Ming and Qing architecture, creating Manchu-style streets and various ethnic cultural activity spaces, thereby promoting its development as a cultural tourism demonstration village. In June 2021, a rural revitalization task force from the Zunhua Municipal Audit Bureau was stationed in the village, further promoting efforts to overcome the weakness of the collective economy and increase income. However, the participation of market entities remains low, and there is a lack of professional industrial operation entities. Villagers have insufficient awareness of

industrial integration and low participation enthusiasm, still relying primarily on traditional agriculture and migrant work. In addition, the scattered nature of agricultural production and the lack of professional operation in cultural tourism industries result in insufficient endogenous motivation for industrial integration. The over-reliance on government investment weakens the sustainability of development.

3. Logical Dimensions and Mechanisms of Agriculture-Culture-Tourism-Wellness Industrial Integration

The integration of ACTW industries is a development model that relies on the resource endowments of these four sectors, breaks down industrial boundaries, and achieves optimal resource allocation, deep integration of business formats, and synergistic value enhancement. Its development follows the five dimensions of rural revitalization and can be systematically analyzed from the perspectives of industrial revitalization, cultural revitalization, ecological revitalization, talent revitalization, and organizational revitalization. Together, these dimensions constitute the underlying mechanism of ACTW industrial integration and promote its high-quality development.

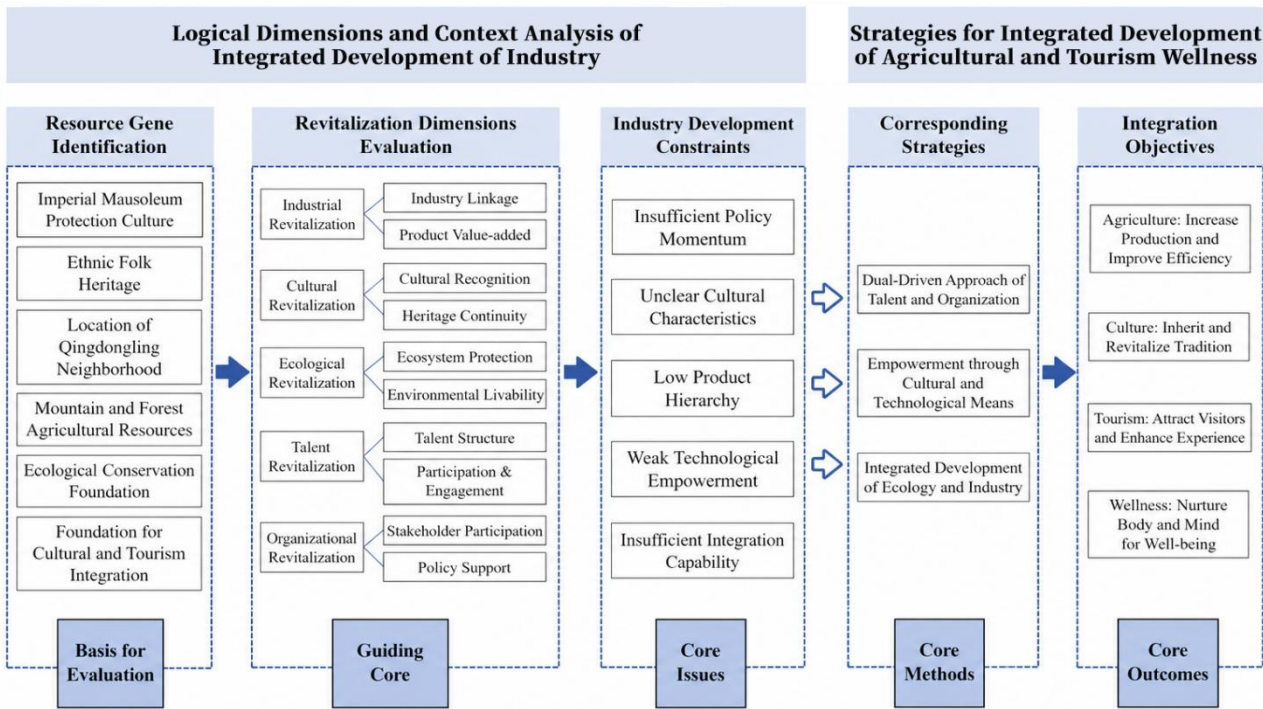


Figure 5. Framework Diagram of the Agriculture-Culture-Tourism-Wellness Industrial Integration Mechanism

3.1. Dimension of Industrial Revitalization

Industrial revitalization is the core support of ACTW integration and the fundamental driving force for village economic development. With agriculture as the foundation, the integration of culture, tourism, and wellness industries promotes the diversification of the rural economy. Agriculture serves as the basis of ACTW integration, providing agricultural products, production scenarios, and ecological resources. It is the core carrier of the "agriculture" sector and an important support for the "tourism" and "wellness" sectors. The cultural industry, as the soul of integration, injects cultural connotations into industrial development, enhances added value, and creates distinctive industrial identities. The tourism industry acts as the carrier of integration, connecting

agriculture, culture, and wellness industries, facilitating resource integration and transformation, and promoting the aggregation of people flow, capital flow, and information flow. The wellness industry, as an extension, relies on agricultural ecological resources and cultural resources to expand development space and meet the growing demand for wellness. These four sectors interact and develop synergistically, forming an integrated pattern characterized by "agriculture as the foundation, culture as empowerment, tourism as linkage, and wellness as extension." The core of this strategy lies in leveraging the synergistic effects of different industries to extend industrial chains and expand industrial functions, thereby promoting rural revitalization and improving quality and efficiency.

3.2. Dimension of Cultural Revitalization

For ethnic minority villages, ethnic culture represents the most critical resource endowment and a unique advantage in industrial integration. The essence of ACTW integration lies in the inheritance and transformation of culture. Through the exploration, protection, and adaptive utilization of ethnic cultural resources, cultural elements can be embedded into agricultural production, tourism experiences, and wellness services. This process not only preserves and promotes culture but also enhances the cultural connotation and added value of industries. Cultural empowerment is the key driving force for ACTW integration in ethnic regions. In the case of Yuxiao Village, the activation and utilization of Manchu culture and tomb-guarding culture can not only create distinctive integrated business formats but also strengthen villagers' cultural identity and sense of belonging, thereby promoting the coordinated development of cultural and industrial revitalization.

3.3. Dimension of Ecological Revitalization

Ecological revitalization is the fundamental guarantee for ACTW industrial integration and a prerequisite for sustainable development. It requires adherence to the principles of ecological priority and green development throughout the integration process. This involves protecting natural ecological resources, promoting green agricultural production, and developing eco-tourism and eco-wellness industries, thereby achieving coordinated development between ecology and industry. As a nationally recognized forest village, Yuxiao Village's ecological resources play a crucial role in advancing ACTW integration. Such integration not only enables the full exploration and utilization of ecological resources but also demonstrates characteristics of low resource consumption and minimal environmental pollution. It effectively promotes harmonious coexistence between humans and nature. By implementing the ACTW integration strategy, Yuxiao Village can leverage its ecological advantages to create a livable environment and provide strong support for ecological revitalization in rural areas.

3.4. Dimension of Talent Revitalization

The sustainable development of the rural economy requires the support of professional talent. ACTW integration involves multiple fields, including agricultural production, cultural exploration, tourism operation, and wellness services, and thus requires interdisciplinary professionals with both expertise and practical skills. These include agricultural technical personnel, cultural and creative professionals, tourism operation managers, and wellness service providers. Currently, ethnic minority villages generally face a shortage of talent, which has become a major bottleneck restricting industrial integration. To address this issue, it is necessary to establish modern agricultural industrial parks, cultural and creative entities, and tourism and wellness resort areas to provide high-quality employment and entrepreneurial platforms. This can help retain local talent, leverage ethnic cultural advantages, and attract migrant workers, college graduates, and demobilized soldiers to return to their hometowns, thereby stimulating their enthusiasm for rural development. At the same time, professional talents required for industrial development should be provided with platforms to apply their expertise in industrial planning, agricultural technology, and tourism and wellness management.

Integrated development can effectively strengthen local attachment to rural areas, guiding people to stay, return, or move to rural regions, thus providing strong support and momentum for rural talent revitalization.

3.5. Dimension of Organizational Revitalization

To promote the rural revitalization strategy, organizational revitalization must serve as the foundation for consolidating the collective strength of industrial integration. This strategy not only innovates rural industrial development models but also optimizes the allocation of organizational resources. In the process of integration, it is necessary to reconstruct rural human-land relationships and clarify the responsibilities and roles of different stakeholders. As the core organization for village industrial development, the village collective plays a leading, coordinating, and service-oriented role in industrial integration. By integrating internal resources, guiding villagers' participation, and connecting with market entities, it promotes the orderly advancement of industrial integration. Meanwhile, business entities such as professional cooperatives and leading enterprises can drive large-scale industrial development, enhancing the level of organization and marketization of industrial integration. In response to the challenges faced by traditional rural governance models, effective measures should be taken to stimulate the wisdom and strength of all stakeholders, improve the rural governance system, and promote comprehensive organizational revitalization. At the same time, a rigorous, prudent, and rational approach should be maintained to ensure the smooth implementation of policies and contribute to rural revitalization.

4. Dilemmas Faced by the Economic Development of Yuxiao Village

Based on the field investigation, although Yuxiao Village has made considerable progress in improving infrastructure and has actively promoted industrial integration and transformation, its development is still constrained by historical and geographical factors. The village exhibits strong regional limitations, and the generally low educational level of residents restricts the depth and breadth of development, making it difficult to achieve further advancement. As a result, the sustainability of the village economy remains weak, and it continues to face multiple challenges at the current stage.

4.1. Insufficient Policy Support and Lack of Endogenous Development Motivation

The industrial integration of Yuxiao Village relies excessively on government leadership, while the policy support system remains incomplete, becoming a key constraint on further development. On the one hand, there is a lack of targeted policies specifically designed for the integration of ACTW industries. Existing policies are mostly general support measures for rural tourism or agricultural development, lacking specificity and operability, and thus failing to meet the differentiated needs of industrial integration. On the other hand, the intensity of policy support is insufficient. Financial investment is mainly concentrated in infrastructure construction and the development of cultural tourism formats, while support for agricultural product deep processing, talent cultivation, and market promotion is

relatively limited. This results in a lack of sustained financial guarantees for industrial integration. Meanwhile, endogenous development motivation is weak. Villagers show low enthusiasm for participating in industrial integration and continue to rely primarily on traditional agriculture and migrant work. Their understanding of industrial integration is limited, and their willingness to participate is relatively low. In addition, the village lacks professional industrial operation entities, and the level of marketization remains low, making it difficult to form a virtuous cycle of self-development and self-improvement. Issues such as population aging, hollowing-out, a high proportion of low-income residents, and an imperfect talent introduction mechanism further hinder the integration of ACTW industries.

4.2. Weak Village Characteristics and Cultural Discontinuity

Culture is the core advantage of industrial integration in Yuxiao Village. However, insufficient exploration, protection, and activation of cultural resources have led to a lack of distinctive features and prominent highlights, along with a clear risk of cultural discontinuity. On the one hand, cultural exploration remains superficial. Current efforts mainly focus on simple displays of tomb-guarding culture and basic presentations of Manchu clothing and cuisine, while deeper cultural connotations, historical value, and folk traditions have not been adequately explored. There is a lack of systematic organization and innovative transformation of cultural resources. The driving effect of nearby scenic areas on the village is limited, derivative cultural products are insufficient, and there is no distinctive intellectual property (IP) image. As a result, the target audience is relatively narrow, and there is a lack of commemorative product development and sales, leading to serious homogenization of cultural tourism formats and weak core competitiveness. On the other hand, cultural inheritance faces significant challenges. There are few inheritors of intangible cultural heritage skills in the village, making it difficult to scale up related industries. Traditional handicrafts, such as gold and silverware processing, have not been effectively promoted. The use of the Manchu language is rare, and historical documentation related to tomb-guarding villages is insufficient, resulting in inadequate research on cultural value. Moreover, the younger generation shows limited awareness and identification with traditional Manchu and tomb-guarding culture, lacking the willingness to actively inherit these traditions. As a result, traditional skills, festivals, and customs face the risk of disappearance, leading to a serious cultural discontinuity problem that undermines the sustainable cultural support for industrial integration.

4.3. Shallow Industrial Integration and Urgent Need for Product Upgrading

To achieve deep integration of ACTW industries, Yuxiao Village must establish a solid foundation by developing high-quality products and advanced industrial formats. However, the current level of product development remains low, industrial integration is insufficiently deep, and the added value of industries is limited, making it difficult to meet diversified and high-quality market demands. In the agricultural sector, production is still dominated by traditional crops, with limited cultivation of high-value specialty products. Most agricultural products are sold in their primary form, with insufficient deep processing. Characteristic

products such as Yanshan chestnuts and Dongling white corn lack refined processing and brand development, resulting in low added value. In the cultural and tourism sector, business formats are relatively single, mainly consisting of exhibition visits, picking experiences, and farmhouse tourism. There is a lack of immersive, interactive, and experiential high-end tourism products, making it difficult to attract and retain visitors. The tourism industrial chain remains short and underdeveloped. In the wellness sector, the industry has not yet been initiated. There has been no effective integration of ecological and cultural resources to develop wellness-related industries, resulting in insufficient breadth and depth of industrial integration. The coordinated development of agriculture, culture, tourism, and wellness industries has not yet been achieved.

4.4. Insufficient Technological Innovation and Weak Development Momentum

Technological innovation is a crucial driving force for improving the quality and efficiency of industrial integration. However, in Yuxiao Village, insufficient technological empowerment and lagging technological application have significantly constrained high-quality development. Due to its remote location and historically limited development, the village has a weak economic and technological foundation. The generally low educational level of residents further affects their ability to adopt and apply new technologies. In addition, the foundational conditions for integrating industry and technology are still underdeveloped, and investment in technological innovation resources remains inadequate. In the agricultural sector, traditional planting and breeding methods are still widely used. The promotion of advanced agricultural technologies is insufficient, and issues such as excessive use of chemical fertilizers and pesticides, lack of green ecological farming techniques, insufficient supply of biological pesticides, and inadequate treatment of livestock waste persist. These problems result in environmental pollution and fail to meet the requirements of ecological, leisure, and wellness-oriented agriculture. In the cultural and tourism sector, there is a lack of application of digital and intelligent technologies. Services such as online promotion, online reservation, and smart tour guidance have not been fully developed, leading to lower convenience and user experience. In terms of industrial operation, the lack of professional technical personnel and operational expertise makes it difficult to achieve refined and standardized management, resulting in low efficiency and quality of industrial integration. The wellness industry, which has high requirements for technological support, currently lacks informatization, technological integration, and intelligent systems, affecting service quality and comfort levels. Moreover, the absence of an integrated digital platform to coordinate information, demand, and supply across industries limits the coordinated development of ACTW integration.

5. Strategies for the Integrated Development of Agriculture-Culture-Tourism-Wellness Industries in Yuxiao Village

5.1. Accelerating Conceptual Transformation and Addressing the Talent Shortage

Talent is the key to industrial integration. It is necessary to

address the shortage of human resources and stimulate endogenous development momentum through measures such as conceptual guidance, talent cultivation, and talent introduction. First, conceptual transformation should be strengthened. The government should scientifically plan the development of the wellness industry and incorporate it into the overall village development framework. Through village meetings, publicity campaigns, and training programs, the concept and advantages of ACTW integration should be widely disseminated among villagers. This will enhance their awareness and willingness to participate, guiding them to actively engage in industrial development and fostering a positive atmosphere of "broad participation and shared benefits." Second, talent cultivation should be enhanced. Cooperation with local agricultural technology extension departments and vocational institutions should be strengthened to provide targeted training programs in areas such as modern agricultural techniques, cultural tourism services, cultural creativity, and marketing. This will improve the professional skills of existing villagers. At the same time, emphasis should be placed on cultivating local talent by encouraging younger generations to return to their hometowns and engage in entrepreneurial activities related to industrial integration. Third, efforts to attract external talent should be intensified. Preferential policies should be introduced to attract interdisciplinary professionals in cultural creativity, tourism operation, and wellness services. Meanwhile, cooperation with enterprises such as Tangshan cultural tourism companies should be strengthened to introduce professional operation teams and improve the level of specialization in industrial integration.

5.2. Deepening Cultural Exploration and Highlighting Village Characteristics

Based on the Manchu culture and tomb-guarding cultural resources of Yuxiao Village, efforts should be made to deepen cultural exploration and promote adaptive utilization, thereby upgrading products and building a distinctive brand for industrial integration. First, cultural exploration should be deepened. Professional teams should be organized to systematically sort out Manchu culture and tomb-guarding culture, excavating their deeper connotations, historical value, and folk traditions. Cultural materials such as tomb-guarding stories, Manchu customs, and traditional craftsmanship should be compiled to establish a comprehensive cultural resource database. Second, the adaptive utilization of culture should be promoted. Cultural elements should be integrated into agricultural product development, cultural tourism formats, and wellness services. Immersive, interactive, and experiential tourism products should be developed to break away from the traditional model of static exhibition visits. At the same time, deep-processed agricultural products with Manchu characteristics should be developed to enhance added value. Third, a cultural brand should be established. By integrating cultural and tourism resources within the village, a distinctive brand centered on "Manchu Tomb-Guarding Culture" should be created. Strengthening brand promotion and marketing will enhance the visibility and influence of Yuxiao Village and address the issue of "lack of distinctive characteristics."

5.3. Strengthening Technological Innovation Empowerment and Enhancing Industrial Added Value

In the context of a new wave of technological revolution, strengthening the research, development, and transformation of technological achievements has become a core component in promoting industrial integration. It is essential to widely apply technological innovation and its outcomes to deeply integrate and optimize ACTW projects and products, thereby constructing an integrated development ecosystem driven by technological innovation, with broad application fields and significant empowerment effects. With technological innovation as the foundation, industrial upgrading should be promoted to facilitate the deep integration of ACTW industries and enhance overall added value.

5.3.1. Application of Technological Innovation and Industry-University-Research Collaboration

First, cooperation with local universities and research institutions should be strengthened. Investment in research on leisure agriculture, wellness-oriented agriculture, and organic agriculture should be increased to explore technological innovations suited to the characteristics of Yuxiao Village. This will improve agricultural productivity and economic benefits while ensuring ecological protection and sustainable development.

Second, agricultural technological innovation should be promoted. Advanced technologies such as green cultivation, large-scale ecological breeding, and agricultural product deep processing should be introduced. The "under-forest planting + ecological breeding" model should be promoted to improve production efficiency and product quality. A deep-processing base for agricultural products should be established to extend the industrial chain and develop branded products with distinctive Manchu characteristics, thereby expanding market reach.

Third, the digital transformation of the cultural tourism industry should be advanced. Modern technologies such as big data and cloud computing should be utilized to optimize marketing strategies. New media platforms, including short videos and live streaming, should be leveraged to promote the cultural and tourism resources of Yuxiao Village. Digital services such as online promotion, reservation systems, and smart tour guides should be developed to enhance visitor experience and convenience while expanding brand influence.

Fourth, technological innovation should be used to promote the development of smart wellness industries. Technologies such as artificial intelligence and big data can be applied to identify target groups, analyze wellness needs, and support daily living, medical services, and wellness tourism, thereby establishing a comprehensive and efficient wellness service system.

Fifth, driven by the digital economy, an integrated information platform for ACTW industries should be established to facilitate the effective exchange and integration of information, demand, and supply, promoting coordinated and innovative development.

5.3.2. Business Model Innovation and Resource Integration

First, relying on local natural resources, characteristic crops should be introduced to increase the proportion of high-value agricultural products. This will not only improve agricultural economic benefits but also provide high-quality products and experiences for the wellness industry, achieving

deep integration between agriculture and wellness industries.

Second, innovation-driven development should be emphasized to avoid homogeneous competition with other scenic areas and Manchu villages. Based on local geographical and ecological characteristics, participatory and experiential tourism projects should be designed. Traditional Manchu customs should be transformed into interactive tourism experiences to enhance visitors' understanding, engagement, and satisfaction.

Third, with wellness as the core, agricultural, cultural, and tourism resources should be integrated to develop comprehensive projects and products. In the initial stage, idle residential houses can be renovated and equipped with basic wellness-supporting facilities, while standardized and specialized services can be provided by rural wellness institutions. In the medium and long term, a comprehensive ACTW industrial park can be planned, offering green food, premium products, leisure and wellness services, and diversified experiences to meet various needs such as vacation living, rehabilitation, and elderly care.

6. Conclusions and Prospects

Based on the systematic analysis of the current situation, challenges, and optimization strategies of the integration of ACTW industries in Yuxiao Village, the main findings of this study can be summarized as follows: First, Yuxiao Village possesses natural endowments for ACTW industrial integration, including unique location advantages, rich cultural heritage, ecological resources, and a solid agricultural foundation. Industrial integration has already been initiated, showing characteristics such as prominent cultural empowerment, emerging linkage between primary and tertiary industries, and a government-led development model. Second, the village faces multiple intertwined challenges in the process of industrial integration, including insufficient policy support, inadequate cultural exploration, low-level product development, limited technological innovation, and a shortage of talent. These factors collectively constrain the improvement of quality and efficiency in industrial integration. Third, addressing these challenges requires a comprehensive approach based on the five dimensions of rural revitalization. Efforts should be made in talent development, cultural activation, technological empowerment, policy support, and ecological protection to promote the deep integration and high-quality development of ACTW industries.

Taking Yuxiao Village, a typical Manchu imperial tomb-guarding village in North China, as a case study, this paper systematically examines the current situation, characteristics, and challenges of ACTW industrial integration and proposes targeted optimization strategies based on the theoretical framework of ACTW integration and the five dimensions of rural revitalization. This study helps to fill the gap in existing research on ACTW integration in ethnic minority villages in this region. The findings not only provide practical guidance for Yuxiao Village in overcoming development bottlenecks, achieving industrial upgrading, and increasing villagers' income, but also offer valuable references for similar ethnic minority villages across China. By leveraging local resource endowments, these villages can promote ACTW integration and advance comprehensive rural revitalization. The study highlights the practical value of a development model characterized by "cultural empowerment, ecological support, and industrial linkage" in ethnic minority regions.

However, this study still has certain limitations. Due to constraints in field research conditions, the data collected on industrial integration in Yuxiao Village are not sufficiently comprehensive or precise. The analysis of the coordination mechanisms among the four industries is not sufficiently in-depth, and comparative studies on the effectiveness of different integration models are lacking. Future research can expand the scope of field investigations and collect more accurate data to further analyze the implementation effects of various integration models and explore more targeted development paths. At the same time, in line with the trends of digitalization and intelligent development, future studies may focus on the application of digital technologies in ACTW integration in ethnic minority villages. This will help to further enrich the research framework, provide more comprehensive insights for high-quality industrial integration, and offer more practical references for similar villages.

Acknowledgements

This paper is supported by Beijing University of Civil Engineering and Architecture Young Teachers' Research Ability Enhancement Program "A Study on the Spatial Evolution and Contemporary Challenges of the Tomb-Guarding Villages at the Eastern Qing Tombs Based on Text-Map Cross-Validation" [grant numbers PG2026025].

References

- [1] X.T. Wang: Current Situation and Problems of Rural Industrial Integration in Ethnic Minority Areas—A Case Study of Qiandongnan Prefecture, Guizhou Province, *Low Carbon World*, Vol. 9 (2019) No.08, p.290-292. (In Chinese)
- [2] H.B. Qiu, S.B. Yu and X.L. Cui: Research on the Integration Development of Agriculture-Culture-Tourism-Wellness Industry of the Hezhe Ethnic Group under the Background of Rural Revitalization, *Heilongjiang Ethnic Series*, (2022) No.05, p.55-60. (In Chinese)
- [3] W.H. He: Research on the Development Path of New Rural Collective Economy under the Background of Rural Revitalization—Based on a Survey of a County in Central China, *Learning Forum*, (2020) No.06, p.39-46. (In Chinese)
- [4] X.J. Luo: Promoting Rural Revitalization in Ethnic Areas through Deep Integration of Agriculture-Culture-Tourism-Wellness-Culture-Tourism-Wellness Industry: Mechanism and Strategies, *Theory & Practice*, (2022) No.02, p.188-191+203. (In Chinese)
- [5] Z.J. Liang: Research on the Sustainable Development Path of Rural Collective Economy under the Background of Rural Revitalization—A Case Study of Pingnan County, *Smart Agriculture Guide*, Vol. 4 (2024) No.04, p.112-115. (In Chinese)
- [6] Y.R. Zhan, W. Deng, J.F. Xiao et al.: Research on the Sustainable Development Path of Rural Collective Economy in Hunan Province under the Background of Rural Revitalization, *Hunan Agricultural Sciences*, (2021) No.09, p.97-100. (In Chinese)
- [7] M.H. Huang and Y.C. Liu: Path Enlightenment of the Integration of Traditional Ethnic Sports and Ethnic Industries under the Perspective of Rural Revitalization—A Case Study of Minle Town, Pu'er City, *Sporting Goods and Technology*, (2023) No.20, p.85-87. (In Chinese)
- [8] Z.L. He, Q. Shi, X.C. Wan et al.: Integration of Water Culture of Ethnic Minorities and Tourism Industry: Internal Motivation and Practical Path—A Case Study of Uyghur Water Culture, *Guangxi Ethnic Studies*, (2023) No.03, p.113-119. (In Chinese)

[9] Y.L. Wen, L.B. Cai and Y.R. Wang: Review on the Integration of Agriculture and Tourism Industry, Agriculture and Technology, Vol. 44 (2024) No.06, p.150-154. (In Chinese)

[10] M. Gao: Practical Dilemmas and Optimization Paths of Rural Industrial Integration Development, Journal of Hunan Administration Institute, (2024) No.02, p.119-124. (In Chinese)